

CONVERSION SERVICES

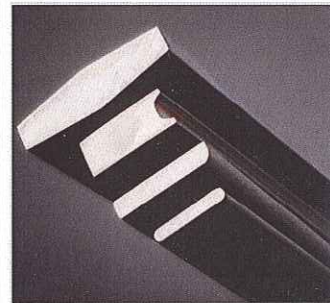
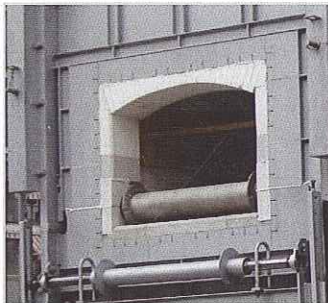
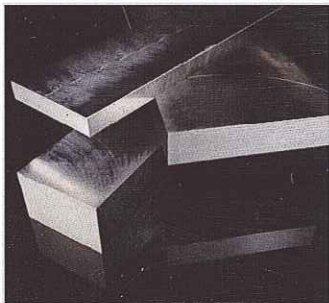
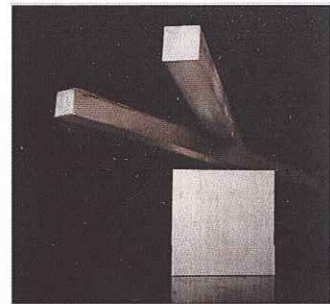
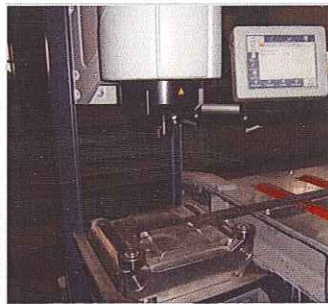
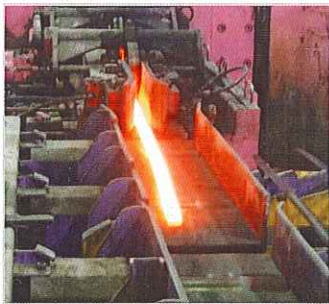


A NEW OFFER FOR FLAT & SQUARE BARS

FORGING - ROLLING - DRAWING - HEAT TREATMENT - FINISHING



CHAMPAGNOLE PLANT



ERASTEEL

www.erasteel.com

a member of
ERAMET 

YOUR BEST PARTNER FOR FLAT & SQUARE BARS



Erasteel, along with its sister company Aubert&Duval, forms the Alloys Division of ERAMET. While the division is recognized for its unequalled expertise in high performance special steels and alloys, Erasteel is the world leading producer of powder metallurgy high speed steels.

In its Champagnole site, which is unanimously considered as a **centre of excellence for flat & square bars**, Erasteel offers a wide range of high-end conversion services.

DISCOVER OUR NEW CONVERSION SERVICES

Erasteel is now able to propose **new tailored hire work services for flat & square steel bars**:

- A global offer: forging, rolling, drawing, heat treatment, pickling, finishing operations and inspections for bars up to 6 meters
- "A la carte" heat treatment or other services

Erasteel provides these services for top-of-the range products used in demanding industries. Erasteel can handle **small batches, with very short leadtimes** for the constant satisfaction of its customers.

OUR KNOW-HOW

- Forging
- Rolling
- Drawing
- Heat treatment
- Straightening
- Inspections

YOUR MATERIALS

- Steels for heat treatment and structural steels
- Structural hardening steels
- Martensitic and austenitic stainless steels
- Cold work steels and tool steels
- Nickel alloys and balance iron

YOUR MARKETS

- Tooling
- Aeronautics
- Nuclear
- Defense
- Watchmaking
- Specialties

HOT AND COLD TRANSFORMATION SERVICES

The semi-products required for hot rolling and forging services are round bars $\varnothing 87$ to 101 mm.

HOT ROLLING SERVICES	
FLAT & SQUARE BARS	Width: from 10 to 85 mm Thickness: from 3 to 70 mm
STANDARD LENGTH	Up to 4400 mm*

DRAWING SERVICES	
FLAT & SQUARE BARS	Width: from 9,5 to 60 mm Thickness: from 6 to 34,5 mm
STANDARD LENGTH	Up to 4400 mm*

FORGING SERVICES	
FLAT & SQUARE BARS	Width: from 70 to 87 mm Thickness: from 48 to 75 mm
ROUND BARS	from $\varnothing 33$ mm

* Other lengths on request (up to 6 meters)

NEW SERVICES FOR FLAT & SQUARE BARS

NEW HEAT TREATMENT SERVICES

In Erasteel's new heat treatment shop located in Champagnole, customers will benefit from NADCAP designed furnaces:

- An annealing furnace
- A hardening furnace
- A tempering furnace



	TEMPERATURE RANGE	FURNACE CLASS	BAR LENGTH	COOLING	MAXIMUM LOAD
Annealing furnace	680°C to 870°C	-	Up to 6.2 meters	-	8500 kilos
Hardening furnace	850°C to 1070°C	Class 2	Up to 6 meters	Air Water Polymer Controlled Cooling Tank (10°C ± 5°C)	2500 kilos
Tempering furnace	450°C to 980°C	<740°C: Class 1 >740°C: Class 2	Up to 7.2 meters	Air Water	5500 kilos

HIGHLY QUALIFIED INSPECTIONS

Ultrasonic*

Hardness* (certified ASTM E10 & ISO 6506)

Metallographic

Magnetic particle* (certified EN 9934 & ISO 9712)

* Inspections are carried out according to aeronautic standards

OTHER SERVICES

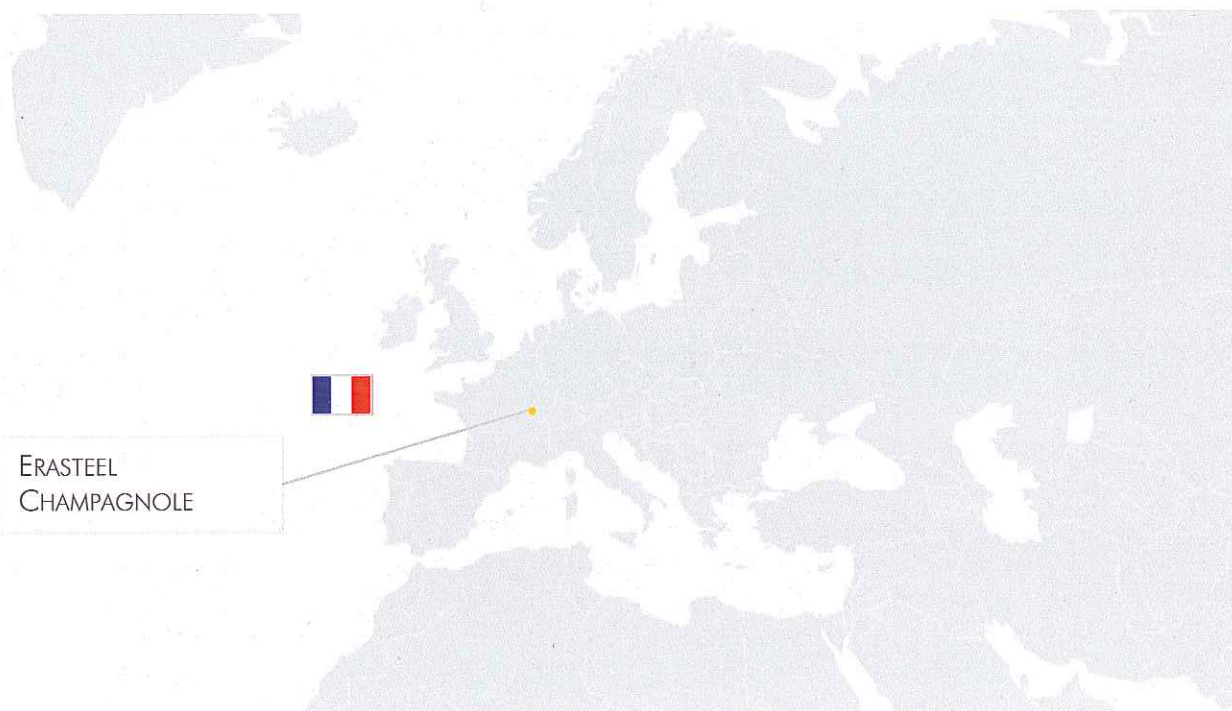
Erasteel now offers new pickling & marking services.



Straightening	End-cutting
Shot blasting	Pickling
Bandsaw cutting	Marking

A DYNAMIC FACTORY AT YOUR SERVICE

Erasteel Champagne is ISO 9001 and ISO 14001.
EN9100 and NADCAP certifications have been applied for.



IDEAL GEOGRAPHICAL POSITION

REACTIVITY

PRODUCT RANGE EXTENSION

FLEXIBILITY

QUALITY

SHORT LEADTIMES

A GLOBAL OFFER

TAILORED SERVICES

LONG BARS UP TO 6M

SMALL BATCHES

ERASTEEL CHAMPAGNOLE - 23 rue G. Clémenceau - BP104 - 39300 Champagne, France
Tel: +33 (0)3 84 52 64 44 - Fax: +33 (0)3 84 52 61 25

For more information, contact us at: champagnole-services@eramet-erasteel.com - www.erasteel.com