



**AIRBUS PROCUREMENT**  
We make it fly together.

# Airbus Programmes Production Issue #94 19 July 2013

# All Programme update

## Content (changes in blue)

- I. Key Messages
- II. All programme update
  - **Overview per type**
- III. A320 Family Programme – Station 40
  - Programme **BY**
- IV. Long Range Programme – Station 40
  - Programme **BW**
- V. A380 Programme – Station 40
  - Programme U
- VI. A350XWB Programme – Station 50
  - Programme G2
- VII. A400M Programme chart – Station 40
  - Programme M

# All Programme update

## Key Messages

- 1) **Airbus long-term A/C planning**: the planning here within is to be understood as complementary to the short-term planning available via AirSupply etc.
- 2) **Provide Visibility**: by issuing this trend of the Airbus overall business, we aim at allowing our suppliers & partners to plan for investments, recruitment and to secure long-term capacity, as well as long lead materials throughout the whole supply chain including sub tiers. Consequently, we request you to **flow this information down to your supply-chain and sub tier suppliers.**
- 3) **Actual plant demand** is conditioned by the month on month variability of the Airbus FAL & Plant requirements (*industrial constraints, holiday periods, replenishment of safety stocks etc.*), and therefore will deviate from the average production rate. Nevertheless, the following production planning shall be appropriately understood and embedded within **your internal production planning.**
- 4) **Securing confirmed Programme Rates** and assessing Rate Scenarios accurately, requires that you deeply understand of your st40 set-back times and surge demands. In addition, we kindly suggest that you consider the additional **workload requested by your other customers.**
- 5) **Contingency capacity**: as requested by Airbus.

# Confirmed Programmes & Rates (Station 40)

## Issue No 94 dated 19 July 2013

	Current Programme	Current Rate per month	Planned Max Rate per month	A/C st40 2013	A/C st40 2014	A/C st40 2015	A/C st40 2016
A320 Fam.	BY	42	43 (March 2014)	491	493	496	487
LR	BW	10	10 (March 2013)	110	109	110	110
A380	U	2.77	2.82 (Aug 2013)	29	30	30	30
A350XWB	G2	0.8	13 (from 2018)	6	23	43	82
A400M	M	0.5	2.5 (from Feb 2016)	9	17	23	28
<b>ALL Programmes st40</b>				<b>645</b>	<b>672</b>	<b>702</b>	<b>737</b>

# Station 40 / 41 per type

## Issue No 94 dated 19 July 2013

ST40 - Programme detail	2013		2014		2015		2016	
	last Progr. issued	current Progr.	last Progr. issued	current Progr.	last Progr. issued	current Progr.	last Progr.	current Progr.
A320 Family	BX	BY	BX	BY	BX	BY	BX	BY
A318	2	2	0	0	1	1	0	0
A319 incl. FAL-C	36	36	38	32	21	21	12	11
A319 NEO	0	0	1	1	1	1	3	4
A320 incl. FAL-C	350	350	303	304	259	259	151	152
A320 NEO	0	0	3	3	19	19	114	113
A321	103	103	148	153	193	193	204	204
A321 NEO	0	0	0	0	2	2	3	3
<b>TOTAL A320 Family</b>	491	491	493	493	496	496	487	487
LR	BVF	BW	BVF	BW	BVF	BW	BVF	BW
A330-200	40	40	26	22	30	23	54	39
A330-200/MR	4	4	4	4	0	0	0	0
A330-200F	7	7	5	7	9	8	14	13
A330-300	59	59	76	76	79	79	53	58
<b>TOTAL LR</b>	110	110	111	109	118	110	121	110
A380	T	U	T	U	T	U		U
A380-800	31	29	31	30	30	30		30
<b>TOTAL DD</b>	31	29	31	30	30	30		30
A350XWB Family	G1	G2	G1	G2	G1	G2		G2
A350-900/800	9	6	20	23	43	40		72
A350-1000	0	0	0	0	0	3		10
<b>TOTAL A350XWB</b>	9	6	20	23	43	43		82
A400M	L	M	L	M	L	M		M
<b>TOTAL A400M</b>	9	9	17	17	25	23		28
<b>TOTAL ALL PROGR.</b>		645		672		702		737

- changes in blue font.



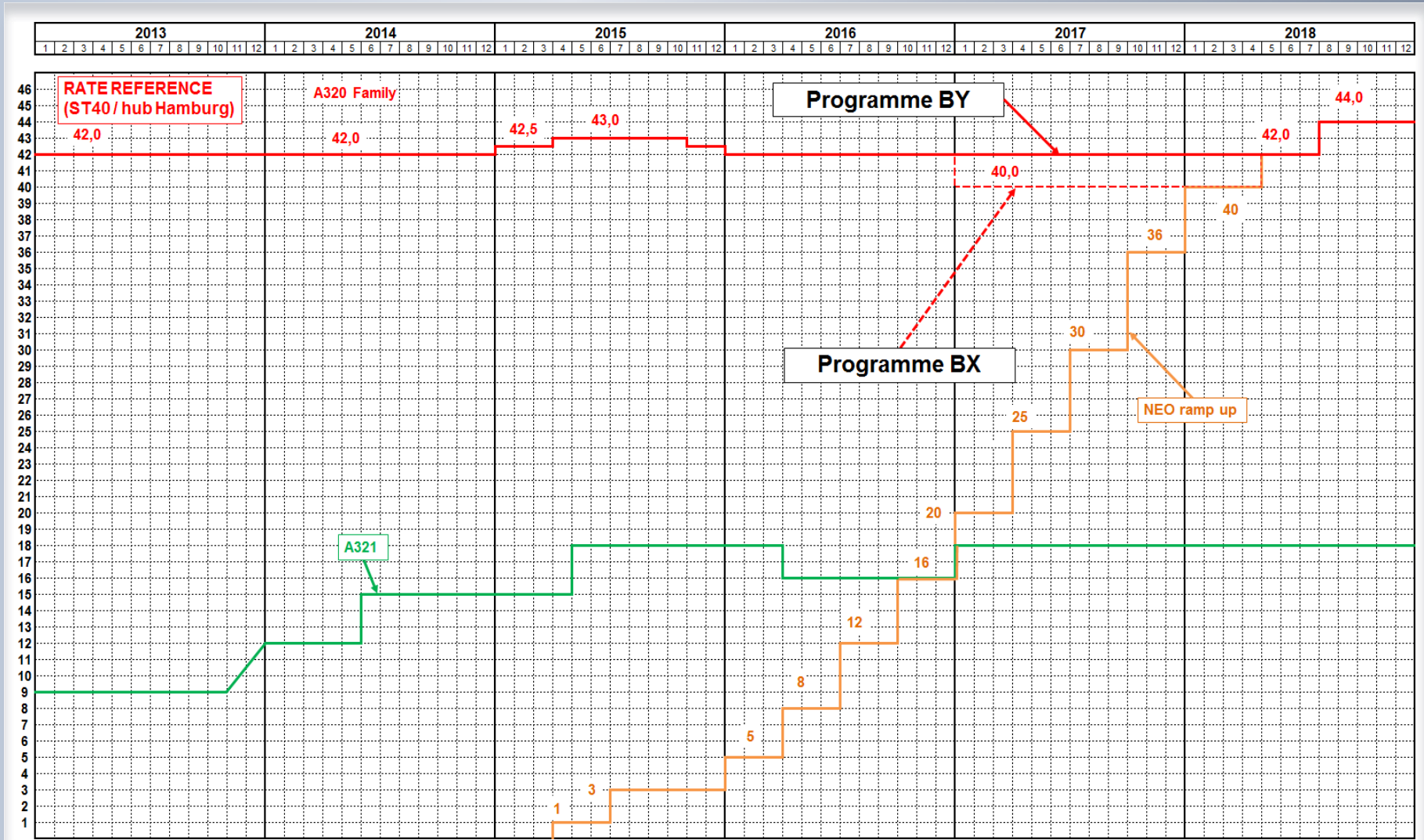
A320 Family – Integrated Planning

# Programme **BY** (incl. NEO flexibility)

## Summary of changes

# A320 Family – Integrated Planning

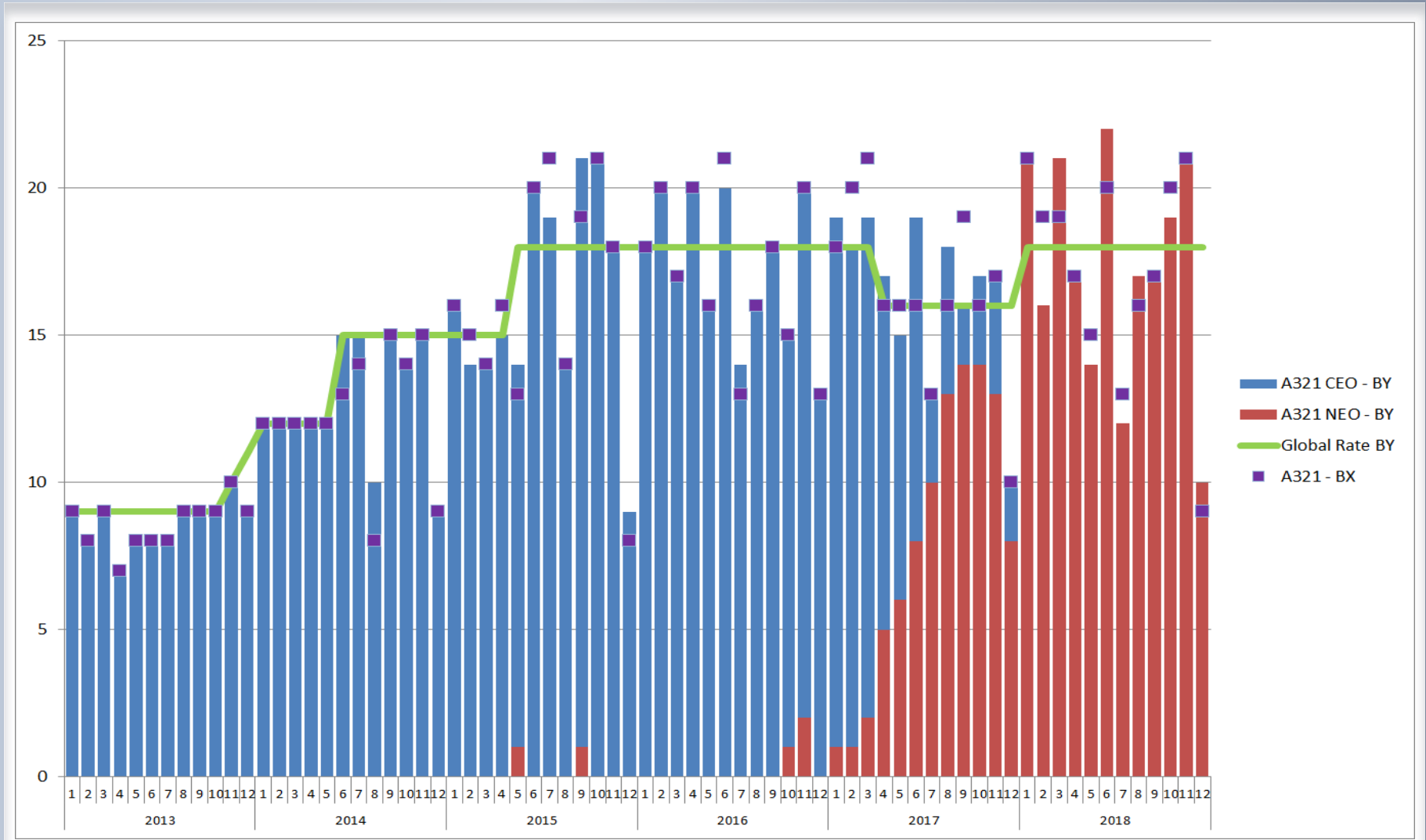
## Programme AI-D1-V-0500-BY – rate chart



# A320 Family – Integrated Planning

Station 40 rate reference  
+ Monthly volume

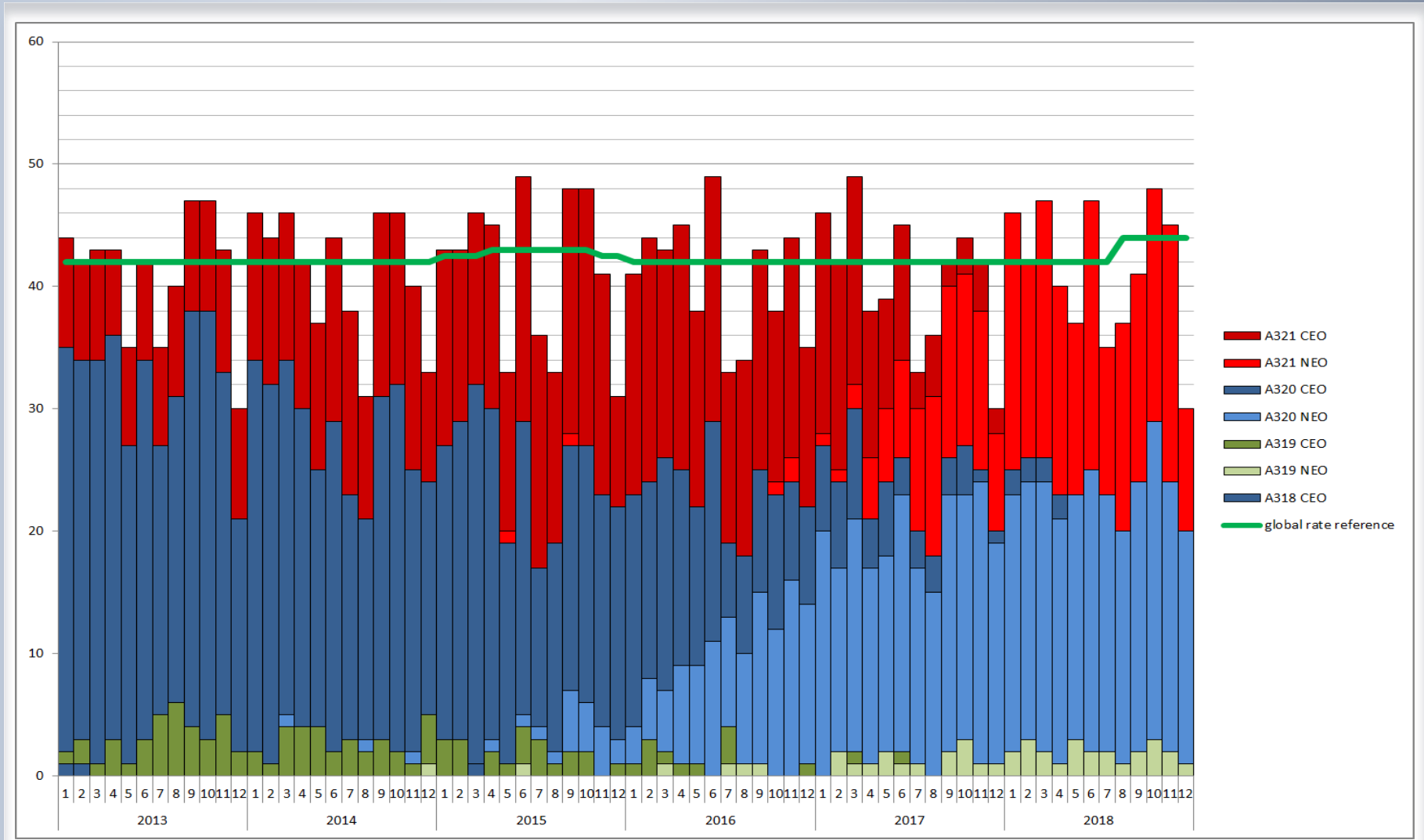
Programme AI-D1-V-0500-BY – **A321 rate** – station 40 theoretical



# A320 Family – Integrated Planning

## Maturity gates BY – CEO/NEO mix

Station 40 rate reference  
+ Monthly volume

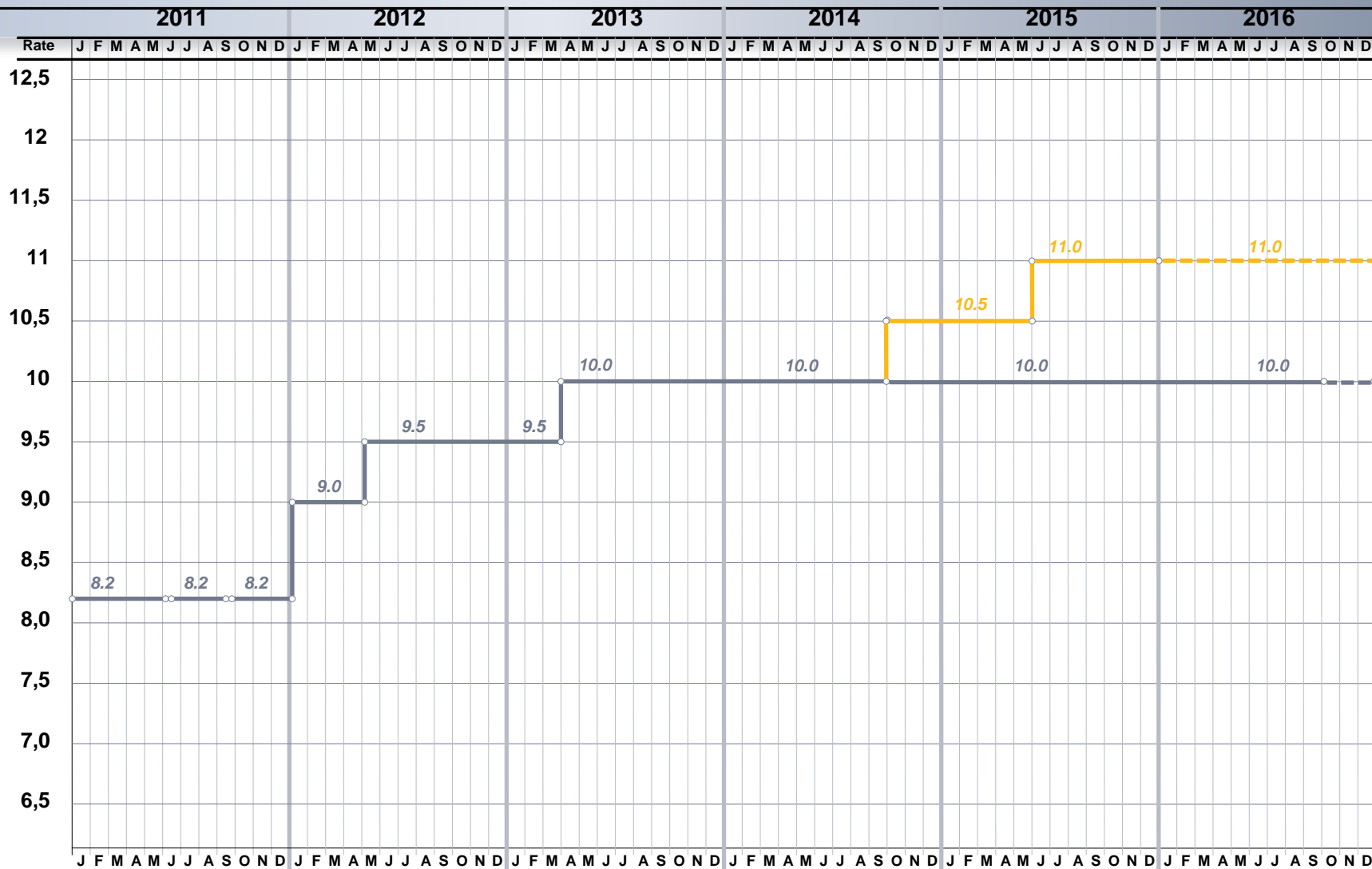


## A330 Family – Integrated Planning

# Programme **BW**

# A330 Programme BW (AIP 130)

# Station 40 Curve



— A330 global rate

- - - - - Previous Programme (BV)

Date: 12.07.2013

Established by BLMI

AI-FI-V-0500-BW





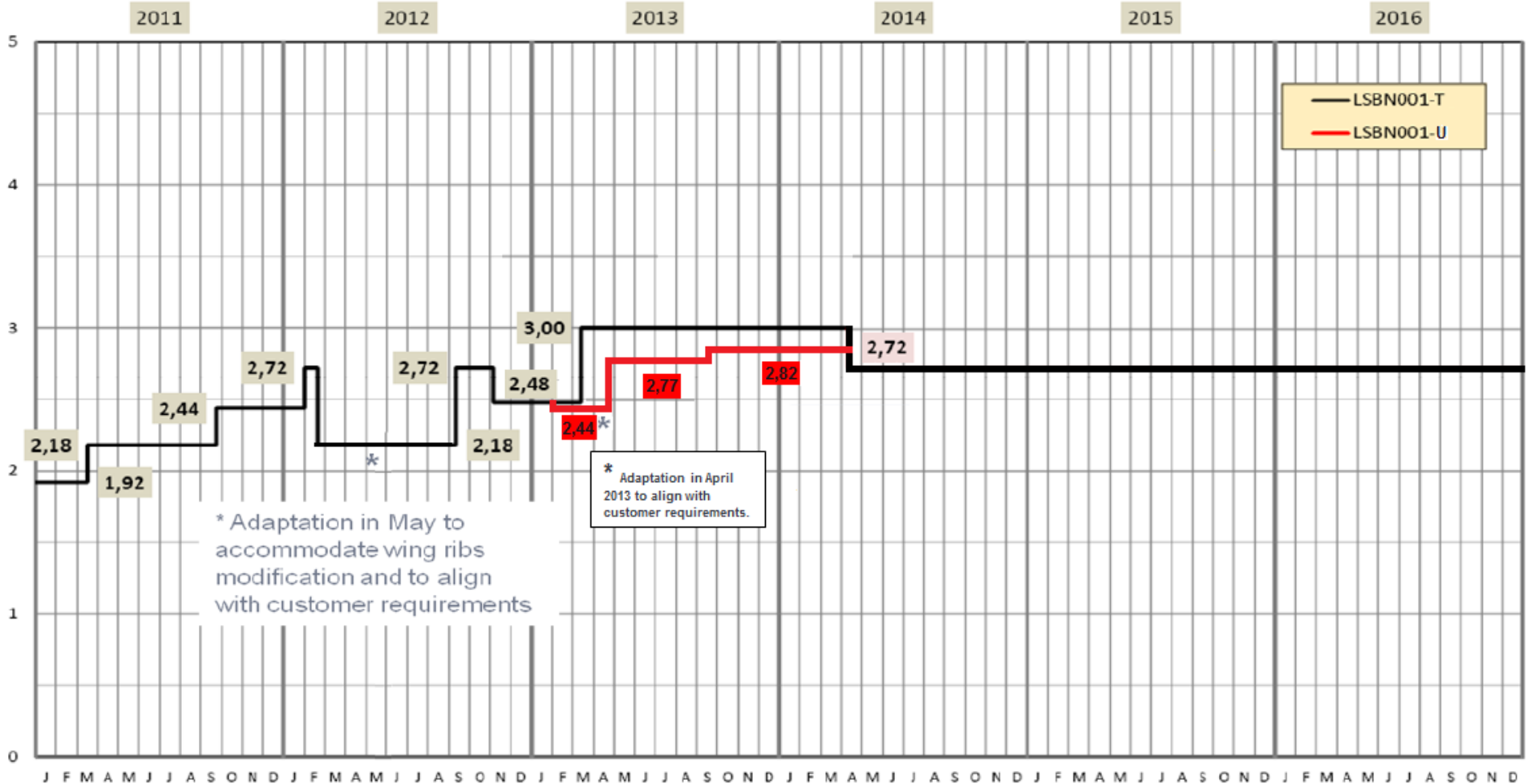
A380 – Integrated Planning

# Programme U

# A380 Programme – Programme U

## Station 41/40 rate evolution

### A380 - FAL PRODUCTION RATE



\* Adaptation in May to accommodate wing ribs modification and to align with customer requirements

\* Adaptation in April 2013 to align with customer requirements.





## A350 Family – Integrated Planning

# Programme G2

## Summary of changes

© AIRBUS S.A.S. All rights reserved. Confidential and proprietary document. The content of this document is provided for information only, may be subject to change and shall not constitute any binding commitment from Airbus. The content of this document is subject to the relevant Non-Disclosure Agreement in place between Airbus and the supplier.



# A350 Family – Integrated Planning (ST50)

## Programme AI-V1-V-500-G2

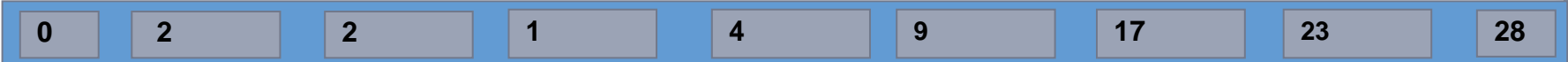
Number of FAL start	2012	2013	2014	2015	2016	2017	2018
Programme G2	<b>2</b> +EW	<b>6</b> +EF	<b>23</b>	<b>43</b>	<b>82</b>	<b>116</b>	<b>139</b>
Type mixing							
- 900/800	<b>2</b> +EW	<b>6</b> +EF	<b>23</b>	40	72	98	102
- 1000				3	10	18	37

A400M – Integrated Planning

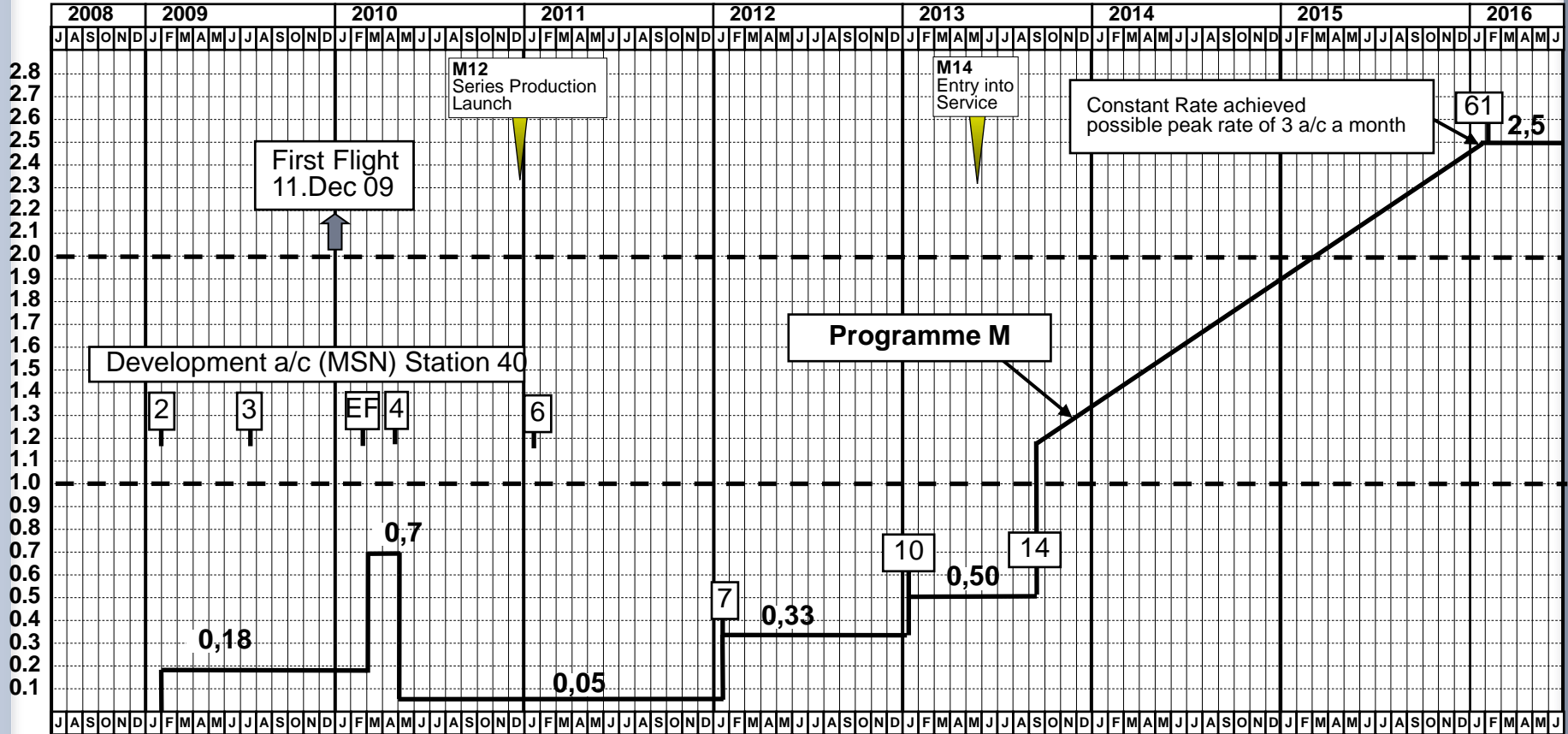
# A400M Industrial Programme M

# A400M Industrial Programme Ramp-up (Station 40) – Programme M

## Station 40



Constant rate achieved from 2016 onwards: 28 station 40 per year



A400M version 2 MDTI - Company proprietary information for internal use only





© AIRBUS S.A.S. All rights reserved. Confidential and proprietary document. This document and all information contained herein is the sole property of AIRBUS S.A.S. No intellectual property rights are granted by the delivery of this document or the disclosure of its content. This document shall not be reproduced or disclosed to a third party without the express written consent of AIRBUS S.A.S. This document and its content shall not be used for any purpose other than that for which it is supplied. The statements made herein do not constitute an offer. They are based on the mentioned assumptions and are expressed in good faith. Where the supporting grounds for these statements are not shown, AIRBUS S.A.S. will be pleased to explain the basis thereof.

AIRBUS, its logo, A300, A310, A318, A319, A320, A321, A330, A340, A350, A380, A400M are registered trademarks.